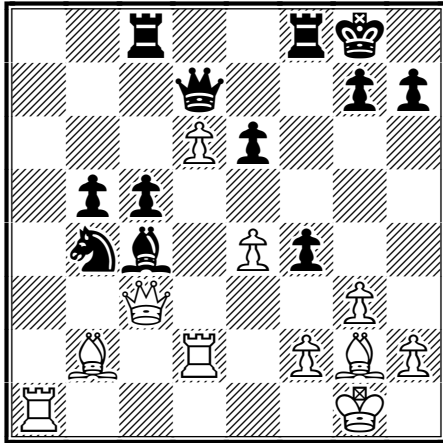


## Quiz Today

**Bacrot (2653) - Lautier (2675)**

 Grand Prix du Senat Paris FRA (2.1),  
 30.06.2002


White to play

## IM Ron Burnett leads in Philadelphia

At the [30<sup>th</sup> Annual World Open](#) in Philadelphia IM Ron Burnett leads after 4 rounds with 3½ points. Zaichik, Fedorowicz and Enkhbat scored 3 points.

Another open tournament has finished in Ljubljana, Slovenia. GM Robert Zelcic took first place with 7½/9.

Final standings:

**1. Zelcic - 7½**

 2-7. Neverov, Nedev, Eljanov,  
 Kurajica, Lekic, Palo - 7, etc.

The Chess part of today's issue is dedicated to a rapid chess tournament in Paris which was won by Vladimir Kramnik. Rapid chess is often considered as something half-serious. But strong players make this "half" worth talking about. The annotated game section features a crushing attack from the World Champion.

## Crushing Attack!

 □ **Bacrot (2653)**

 ■ **Kramnik (2809)**

 Grand Prix du Senat Paris FRA (1.2),  
 29.06.2002 E15

**1.d4 ♘f6 2.c4 e6 3.♘f3 b6 4.g3 ♙a6 5.b3 ♙b4+ 6.♙d2 ♙e7**

With this well-known manoeuvre Black prevents the optimal development of White's minor pieces on the queenside which is certainly Bb2 and Nc3.

**7.♙g2 ♙b7 8.♘c3 d5 9.0-0 0-0 10.cxd5 exd5 11.♙f4 ♘a6**

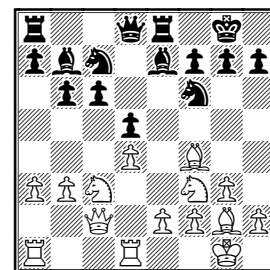
This square is better than d7. From here the knight may support c7-c5 advance, besides Black plans to transpose it to e6 via c7.

**12.♖c2 ♜e8**

A flexible move. 12...c5 13.♞fd1 ♖c8 is also playable but Kramnik isn't in a hurry to reveal his plans.

**13.♞fd1 c6 14.a3**

14.♗b2 ♘c7 15.b4 ♘e6 16.♙e5 was played in Salov - Hjartarson (Rotterdam 1989).

**14...♘c7**

**15.♙xc7?!**

A dubious decision. Curious was 15.♘g5 setting a trap. If 15...h6? (15...♙d6) then 16.♙xc7 ♖xc7 17.♘xd5! but Black plays simply 15...Bd6. ; a "normal" move is 15.♙e5

**15...♗xc7 16.b4 ♙d6 17.e3**

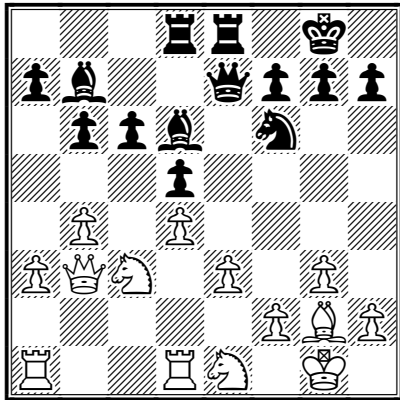
The only disadvantage of Black's position is the passive light-squared bishop, but it doesn't play a major part. Black has a wide range of active plans. For instance, a7-a5 is possible, taking the initiative on the queenside. Kramnik prefers to concentrate his

forces on another flank.

**17...♖e7 18.♗b3 ♜ad8**

An ordinary move, but very useful at the same time. Now Black can play Bc8 (or Bb8 if he needs it) at any moment without breaking the communication between his rooks.

**19.♘e1**



A sensible idea which is common in these sort of positions. But the knight's withdrawal from the kingside has its drawbacks too.

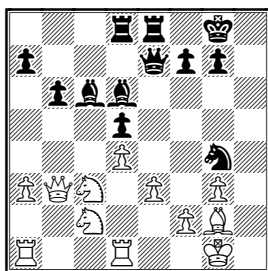
**19...h5! 20.b5 h4 21.bxc6 hxc3 22.hxc3**

Of course, bad is 22.cxb7? gxf2+ 23.♕xf2? ♖xe3+ 24.♕f1 ♘g4 mating in one.

**22...♙xc6 23.♘c2**

The line 23.♘d5 ♘d5 24.♙xd5 ♙xd5 25.♖xd5 ♙xc3 demonstrates the utility of Black's 18th move.

**23...♘g4**



**24.♘d5**

Passive defence didn't promise much, and Bacrot decided to take a pawn. But now Bc6 becomes active.

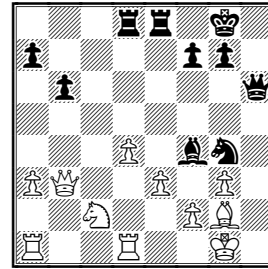
**24...♗g5 25.♘f4**

25.♘cb4 loses to 25...♙xb4 26.♘xb4 ♙xg2 27.♗xg2 ♘xe3+! 28.fxe3 ♜xe3

**25...♙xf4 26.♙xc6**

26.exf4 ♖h5 and the bishop is untouchable because of mate in two.

**26...♗h6! 27.♙g2**



**27...♙xc3!**

The final blow.

**28.fxc3**

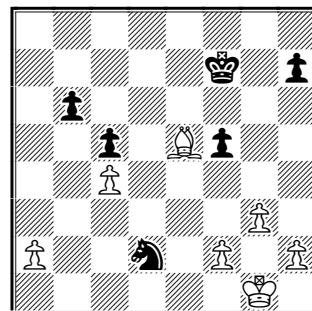
Now White loses quickly, but the most stubborn 28.♙d2 ♖h2+ 29.♕f1 ♜e6!? 30.f3 ♜f6 31.♙ad1 ♙c7! didn't help either.

**28...♖h2+ 29.♕f1 ♖xc3 30.♙d2 ♙d6!**

White resigned. A very convincing win from Kramnik. **0-1**

**Lautier (2675) – Fressinet (2606)**

Grand Prix du Senat Paris FRA (1.4), 29.06.2002



White to play

This Next example shows an extra winning/losing possibility available in rapid chess. As you know, in a classical game you may be checkmated or you may lose all your pieces and resign. You may even forfeit on time. All of these are painful ways to lose but I'm not trying to get you down about the game!. Take a look at the way Joel Lautier lost in Paris and you may not feel so bad about losing your next classical game! Let's look at the position. Yes, White is unable to save the c4-pawn. It's rather disappointing because otherwise White could get some winning chances. However in this ending he

doesn't run any risk. White needs just a little care as Nf3+ threatens to win the bishop. Lautier decided to parry the threat by moving his king towards the centre which is a useful and recommended idea in endgame play. So...Joel played 39.Kf1 and immediately lost the game by making this illegal move! Unfortunately this silly mistake caused him to miss out on the final. The rules of rapid chess are sometimes cruel. **0-1**

**Solution to Quiz Today:**

27.♠a7! 27.♠a7 ♖xa7 28.d7 **1-0**

**Contact information.** Do you want to report a tournament or have a suggestion concerning Chess Today? E-mail us at [ct@gmsquare.com](mailto:ct@gmsquare.com). We always appreciate your comments and feedback!

**Please tell your chess friends about Chess Today.** Feel free to send them our newspaper to sample – with more readers the price will go down, while the quality will go up!

**Chess Today is published by:**

Alexander Baburin, 3 Eagle Hill, Blackrock, Co. Dublin, Ireland. Tel: (353-1) 278-2276. Fax/phone: (353-1) 283-6839.

E-mail: [ct@gmsquare.com](mailto:ct@gmsquare.com)

Website: <http://www.chesstoday.net/>

**Editors:**

GM Alexander Baburin, GM Ruslan Scherbakov, IM Vladimir Barsky, GM Mikhail Golubev, IM Maxim Notkin.

**Technical editors:**

Graham Brown and Ralph P. Marconi.

**Chess Today is copyright 2002 by Alexander Baburin** and protected intellectual property under the International Copyright convention. Any unauthorised reproduction, via print, electronic format, or in any form whatsoever is strictly prohibited without express written permission.